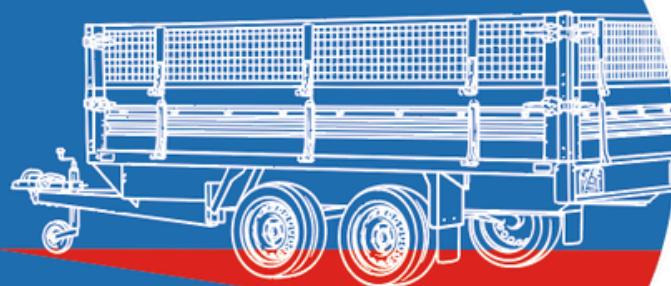


**SIMPLY  
GOOD TRAILERS**



**faro**  
trailers

# ***Trailers catalog***

**2025**





## Multi-Offer Sp. z o.o.



is a dynamically developing company specializing in the production of single- and double-axle car trailers. By constantly expanding our offer and responding to market demand, we provide our customers with products tailored to their needs. Attention to detail and high-quality materials distinguish the Faro Trailers brand from other manufacturers.

FaroTrailers also offers spare parts, wheels, and other accessories for trailers. Our trusted employees and distributors guarantee professional customer service, which is why customers stay with the company for years.

**Simply good trailers.**



### ***1-Axle Unbraked Trailers***

Tractus	6
Tractus Multi	10
Tactus Flex	13
Pondus	16
Pondus Multi	18

### ***2-Axle Unbraked Trailers***

Solidus	20
Magicus	23

### ***2-Axle Braked Trailers***

Magicus Max	25
Solidus Max	28

### ***Boat Trailers***

Aqua	32
Aqua Flex	34
Aqua Top	36
Aqua Top Flex	38
Aqua Ponton	40

### ***Special Trailers***

Amicus	43
Viarus	44
Viarus One	45

# TRAILERS

## 1- and 2-axle

### CORROSION RESISTANCE PROTECTION

STEEL COMPONENTS ARE COATED WITH A 275G/M2 ZINC LAYER (CLASS A), PROVIDING A SIGNIFICANT DEGREE OF RESISTANCE TO CORROSION AND OXIDATION.

### LIGHTING

12V ELECTRICAL SETUP, 7 OR 13-PIN CONNECTOR

### LOAD CAPACITY 750 KG

TRAILERS ARE DESIGNED TO CARRY LOADS OF DIFFERENT TYPES AND SIZES.

### DESIGN

RIVETED AND SCREWED, IT ENABLES THE REPLACEMENT OF COMPONENTS THAT ARE DAMAGED DURING OPERATION.

### STANDARD

EVERY TRAILER WE OFFER IS FURNISHED WITH A SUPPORT WHEEL AND A HOLDER.

### FRAME

IS CONSTRUCTED FROM HIGH-STRENGTH COLD-BENT SHEET METAL AND STEEL PROFILES FEATURING A RECTANGULAR CROSS-SECTION.

### FLOOR

FLOOR CONSTRUCTED FROM ANTI-SLIP, WATER-RESISTANT PLYWOOD OF POLISH MANUFACTURE

### COMPONENTS

THE TRAILERS ARE CONSTRUCTED FROM PARTS SOURCED FROM WELL-KNOWN COMPANIES SUCH AS STEELPRESS, KNOTT, OR AL-KO.

### MUDGUARDS

COMPOSED OF POLYETHYLENE, DURABLE AGAINST DEFORMATION AND ENVIRONMENTAL CONDITIONS

### HOMOLOGATION

OUR TRAILERS ARE COMPLIANT WITH EUROPEAN HOMOLOGATION, ADHERING TO TECHNICAL STANDARDS AND SAFETY REQUIREMENTS.

The following offer is for informational purposes only. Considering the continuous development of our company, the manufacturer reserves the right to introduce changes and technical modifications. Photos are for illustrative purposes only.

# TRACTUS



**TRACTUS** - a modern trailer line with wheels on the outside, made from the best materials available on the Polish market. The durability of the structure is ensured by a frame made of cold-formed longitudinal beams in a U-shaped cross-section and an adequate number of transverse beams, providing the right stiffness and durability. The trailer's sides can be easily removed, allowing the trailer to be used as a platform.

## ADDITIONAL EQUIPMENT:

- A frame with a tarpaulin H-1100 mm, H-800 mm,
- flat tarpaulin,
- spare wheel support,
- spare wheel,
- non-braked axle 1000 kg by STEELPRESS with compact bearings (recommended for rental companies),
- full side extensions,
- mesh side extensions,
- side wall reinforcement.

## STANDARD EQUIPMENT:

- V-type drawbar, bent from 2.5 mm thick A-class sheet metal
- Trailer side walls made of galvanized sheet metal with a thickness of 1.25 mm, class A
- Front/rear side walls hinged, full or filled with plywood
- Removable side walls, full or filled with plywood
- Coupling head with a capacity of 750 kg or 1300 kg from STEELPRESS, KNOTT, or AL-KO
- Floor made of non-slip, waterproof plywood with a thickness of 9 mm
- Wheels 155/70 R13 or 155/80 R13
- Cargo tie-down straps
- Sideboard rollers for tarpaulin

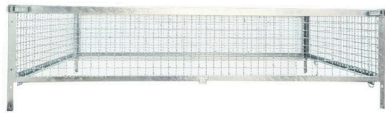
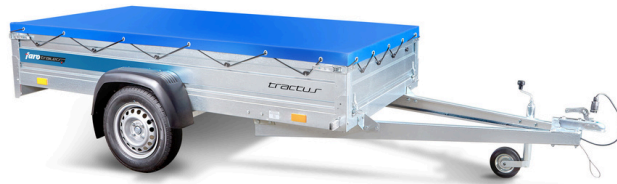
CODE	Type	Cargo space dimensions (cm)	Side Type	Side height (cm)	Load capacity min. - max. (kg)	External dimensions of the trailer (cm)
10900000	TRACTUS	160 x 125	METAL	35	235 - 585	301 x 170
10910000	TRACTUS+	160 x 125	METAL-PLYWOOD	35	232 - 582	301 x 170
10920000A	TRACTUS	160 x 125	METAL	45	232 - 582	301 x 170
10940000A	TRACTUS+	160 x 125	METAL-PLYWOOD	45	225 - 575	301 x 170
10900000R	TRACTUS PLATFORM	160 x 125	PLATFORM	X	235 - 585	301 x 170
10800000	TRACTUS	180 x 125	METAL	35	230 - 580	321 x 170
10810000	TRACTUS+	180 x 125	METAL-PLYWOOD	35	225 - 575	321 x 170
10820000A	TRACTUS	180 x 125	METAL	45	225 - 575	321 x 170
10840000A	TRACTUS+	180 x 125	METAL-PLYWOOD	45	220 - 570	321 x 170
10800000R	TRACTUS PLATFORM	180 x 125	PLATFORM	X	235 - 585	321 x 170
10100000	TRACTUS	205 x 125	METAL	35	225 - 575	345 x 170
10110000	TRACTUS+	205 x 125	METAL-PLYWOOD	35	255 - 565	345 x 170
10120000A	TRACTUS	205 x 125	METAL	45	220 - 570	345 x 170
10140000A	TRACTUS+	205 x 125	METAL-PLYWOOD	45	210 - 560	345 x 170
10100000R	TRACTUS PLATFORM	205 x 125	PLATFORM	X	235 - 585	345 x 170
10101000	TRACTUS	205 x 140	METAL	35	212 - 562	345 x 185
10111000	TRACTUS+	205 x 140	METAL-PLYWOOD	35	199 - 549	345 x 185
10121000A	TRACTUS	205 x 140	METAL	45	215 - 565	345 x 185
10141000A	TRACTUS+	205 x 140	METAL-PLYWOOD	45	205 - 555	345 x 185
10101000R	TRACTUS PLATFORM	205 x 140	PLATFORM	X	225 - 575	345 x 185
10200000	TRACTUS	220 x 125	METAL	35	220 - 570	360 x 170
10210000	TRACTUS+	220 x 125	METAL-PLYWOOD	35	205 - 555	360 x 170
10220000A	TRACTUS	220 x 125	METAL	45	210 - 560	360 x 170
10240000A	TRACTUS+	220 x 125	METAL-PLYWOOD	45	200 - 550	360 x 170
10200000R	TRACTUS PLATFORM	220 x 125	PLATFORM	X	230 - 580	360 x 170
10201000	TRACTUS	220 x 140	METAL	35	198 - 548	360 x 185
10211000	TRACTUS+	220 x 140	METAL-PLYWOOD	35	188 - 536	360 x 185
10220000A	TRACTUS	220 x 140	METAL	45	205 - 555	360 x 185

CODE	Type	Cargo space dimensions (cm)	Side Type	Side height (cm)	Load capacity min. - max. (kg)	External dimensions of the trailer (cm)
10241000A	TRACTUS+	220 x 140	METAL-PLYWOOD	45	195 - 545	360 x 185
10201000R	TRACTUS PLATFORMA	220 x 140	PLATFORM	x	215 - 565	360 x 185
10300000	TRACTUS	236 x 125	METAL	35	215 - 565	376 x 170
10310000	TRACTUS+	236 x 125	METAL-PLYWOOD	35	200 - 550	376 x 170
10320000A	TRACTUS	236 x 125	METAL	45	205 - 555	376 x 170
10340000A	TRACTUS+	236 x 125	METAL-PLYWOOD	45	195 - 545	376 x 170
10300000R	TRACTUS PLATFORMA	236 x 125	PLATFORM	X	215 - 565	376 x 170
10301000	TRACTUS	236 x 140	METAL	35	526 - 540	376 x 185
10311000A	TRACTUS+	236 x 140	METAL-PLYWOOD	35	176 - 526	376 x 185
10321000A	TRACTUS	236 x 140	METAL	45	195 - 545	376 x 185
10341000A	TRACTUS+	236 x 140	METAL-PLYWOOD	45	185 - 535	376 x 185
10301000R	TRACTUS PLATFORMA	236 x 140	PLATFORM	X	210 - 560	376 x 185
10501000	TRACTUS	250 x 140	METAL	35	195 - 545	381 x 185
10511000	TRACTUS+	250 x 140	METAL-PLYWOOD	35	165 - 515	381 x 185
10521000A	TRACTUS	250 x 140	METAL	45	190 - 540	381 x 185
10541000A	TRACTUS+	250 x 140	METAL-PLYWOOD	45	155 - 505	381 x 185
10501000R	TRACTUS PLATFORMA	250 x 140	PLATFORM	X	205 - 555	381 x 185
10400000	TRACTUS	263 x 125	METAL	35	205 - 555	400 - 170
10410000	TRACTUS+	263 x 125	METAL-PLYWOOD	35	185 - 535	400 - 170
10420000A	TRACTUS	263 x 125	METAL	45	195 - 545	400 - 170
10441000A	TRACTUS+	263 x 125	METAL-PLYWOOD	45	180 - 530	400 - 170
10400000R	TRACTUS PLATFORMA	263 x 125	PLATFORM	X	215 - 565	400 - 170
10401000	TRACTUS	263 x 140	METAL	35	190 - 540	400 - 185
10411000	TRACTUS+	263 x 140	METAL-PLYWOOD	35	170 - 520	400 - 185
10421000A	TRACTUS	263 x 140	METAL	45	190 - 540	400 - 185
10440000A	TRACTUS+	263 x 140	METAL-PLYWOOD	45	165 - 515	400 - 185
10401000R	TRACTUS PLATFORM	263 x 140	PLATFORM	X	205 - 555	400 - 185
10402000	TRACTUS	263 x 150	METAL	35	180 - 530	400 x 195

CODE	Type	Cargo space dimensions (cm)	Side Type	Side height (cm)	Load capacity min. - max. (kg)	External dimensions of the trailer (cm)
10412000	TRACTUS+	263 x 150	METAL-PLYWOOD	35	155 - 505	400 x 195
10422000A	TRACTUS	263 x 150	METAL	45	190 - 540	400 x 195
10442000A	TRACTUS+	263 x 150	METAL-PLYWOOD	45	145 - 495	400 x 195
10402000R	TRACTUS PLATFORM	263 x 150	PLATFORM	X	200 - 550	400 x 195

# ACCESSORIES

SIDES EXTENSION		COVERS				FRAME	
solid H350	net sides H400	flat	H400	H800	H1100	H800	H1100



# TRACTUS MULTI



**TRACTUS MULTI** - a multifunctional trailer that facilitates unloading of goods thanks to its tilting cargo box. The frame is made of cold-formed U-section longitudinal beams and an adequate number of crossbars, ensuring proper rigidity and durability of the structure. The trailer's sideboards can be easily dismantled, allowing the trailer to be used as a flatbed platform. The tilting cargo box is attached to the frame with two solid locks.

## ADDITIONAL EQUIPMENT:

- frame with tarpaulin H-1100 mm, H-800 mm,
- flat tarpaulin,
- spare wheel bracket,
- spare wheel,
- unbraked 1000 kg axle by STEELPRESS with compact bearings (recommended for rental companies),
- solid steel side extensions,
- mesh side extensions,
- reinforced sideboard.

## STANDARD EQUIPMENT:

- V-type drawbar, bolted, bent from 2.5 mm thick class A sheet metal,
- trailer sideboards made of 1.25 mm thick galvanized class A sheet metal,
- front/rear boards - openable, solid metal or plywood-filled,
- sideboards - removable, solid metal or plywood-filled,
- coupling head 750 kg or 1300 kg by STEELPRESS, KNOTT or AL-KO,
- floor made of 9 mm anti-slip, waterproof plywood,
- unbraked 750 kg axle by STEELPRESS, KNOTT or AL-KO,
- wheels 155/70 R13 or 155/80 R13,
- load fastening brackets,
- tarpaulin support rollers.

CODE	Type	Cargo space dimensions (cm)	Side Type	Side height (cm)	Load capacity min. - max. (kg)	External dimensions of the trailer (cm)
10900000U	TRACTUS MULTI	160 x 125	METAL	35	235 - 585	301 x 170
10910000U	TRACTUS MULTI+	160 x 125	METAL-PLYWOOD	35	232 - 582	301 x 170
10920000U	TRACTUS MULTI	160 x 125	METAL	45	232 - 582	301 x 170
10940000U	TRACTUS MULTI+	160 x 125	METAL-PLYWOOD	45	225 - 575	301 x 170
10900000RU	TRACTUS MULTI PLATFORM	160 x 125	PLATFORM	brak	235 - 585	301 x 170
10800000U	TRACTUS MULTI	180 x 125	METAL	35	230 - 580	321 x 170
10810000U	TRACTUS MULTI+	180 x 125	METAL-PLYWOOD	35	225 - 575	321 x 170
10820000U	TRACTUS MULTI	180 x 125	METAL	45	225 - 575	321 x 170
10840000U	TRACTUS MULTI+	180 x 125	METAL-PLYWOOD	45	220 - 570	321 x 170
10800000RU	TRACTUS MULTI PLATFORM	180 x 125	PLATFORM	brak	235 - 585	321 x 170
10100000U	TRACTUS MULTI	205 x 125	METAL	35	225 - 575	345 x 170
10110000U	TRACTUS MULTI+	205 x 125	METAL-PLYWOOD	35	255 - 565	345 x 170
10120000AU	TRACTUS MULTI	205 x 125	METAL	45	220 - 570	345 x 170
10140000U	TRACTUS MULTI+	205 x 125	METAL-PLYWOOD	45	210 - 560	345 x 170
10100000RU	TRACTUS MULTI PLATFORM	205 x 125	PLATFORM	brak	235 - 585	345 x 170
10101000U	TRACTUS MULTI	205 x 140	METALOW	35	212 - 562	345 x 185
10111000U	TRACTUS MULTI+	205 x 140	METAL-PLYWOOD	35	199 - 549	345 x 185
10121000U	TRACTUS MULTI	205 x 140	METAL	45	215 - 565	345 x 185
1014100U	TRACTUS MULTI+	205 x 140	METAL-PLYWOOD	45	205 - 555	345 x 185
10101000RU	TRACTUS MULTI PLATFORM	205 x 140	PLATFORM	brak	225 - 575	345 x 185
10200000U	TRACTUS MULTI	220 x 125	METAL	35	220 - 570	360 x 170
10210000U	TRACTUS MULTI+	220 x 125	METAL-PLYWOOD	35	205 - 555	360 x 170
10220000AU	TRACTUS MULTI	220 x 125	METAL	45	210 - 560	360 x 170
10240000AU	TRACTUS MULTI+	220 x 125	METAL-PLYWOOD	45	200 - 550	360 x 170
10200000RU	TRACTUS MULTI PLATFORM	220 x 125	PLATFORM	brak	230 - 580	360 x 170
10201000U	TRACTUS MULTI	220 x 140	METAL	35	198 - 548	360 x 185
10211000U	TRACTUS MULTI+	220 x 140	METAL-PLYWOOD	35	188 - 536	360 x 185
10221000U	TRACTUS MULTI	220 x 140	METAL	45	205 - 555	360 x 185

CODE	Type	Cargo space dimensions (cm)	Side Type	Side height (cm)	Load capacity min. - max. (kg)	External dimensions of the trailer (cm)
10241000U	TRACTUS MULTI+	220 x 140	METAL-PLYWOOD	45	195 - 545	360 x 185
10201000RU	TRACTUS MULTI PLATFORM	220 x 140	PLATFORM	brak	215 - 565	360 x 185
10300000U	TRACTUS MULTI	236 x 125	METAL	35	215 - 565	376 x 170
10310000U	TRACTUS MULTI+	236 x 125	METAL-PLYWOOD	35	200 - 550	376 x 170
10320000AU	TRACTUS MULTI	236 x 125	METAL	45	205 - 555	376 x 170
10340000AU	TRACTUS MULTI+	236 x 125	METAL-PLYWOOD	45	195 - 545	376 x 170
10300000RU	TRACTUS MULTI PLATFORM	236 x 125	PLATFORM	brak	215 - 565	376 x 170
10501000U	TRACTUS MULTI	250 x 140	METAL	35	195 - 545	381 x 185
10511000U	TRACTUS MULTI+	250 x 140	METAL-PLYWOOD	35	165 - 515	381 x 185
10521000U	TRACTUS MULTI	250 x 140	METAL	45	190 - 540	381 x 185
10541000U	TRACTUS MULTI+	250 x 140	METAL-PLYWOOD	45	155 - 505	381 x 185
10501000RU	TRACTUS MULTI PLATFORM	250 x 140	PLATFORM	brak	205 - 555	381 x 185
10400000U	TRACTUS MULTI	263 x 125	METAL	35	205 - 555	400 x 170
10410000U	TRACTUS MULTI+	263 x 125	METAL-PLYWOOD	35	185 - 535	400 - 170
10420000AU	TRACTUS MULTI	263 x 125	METAL	45	195 - 545	400 x 170
10440000AU	TRACTUS MULTI+	263 x 125	METAL-PLYWOOD	45	180 - 530	400 - 170
10400000RU	TRACTUS MULTI PLATFORM	263 x 125	PLATFORM	brak	215 - 565	400 x 170
10402000U	TRACTUS MULTI	263 x 150	METAL	35	180 - 530	400 x 195
10412000U	TRACTUS MULTI+	263 x 150	METAL-PLYWOOD	35	155 - 505	400 x 195
10422000U	TRACTUS MULTI	263 x 150	METAL	45	190 - 540	400 x 195
10442000U	TRACTUS MULTI+	263 x 150	METAL-PLYWOOD	45	145 - 495	400 x 195
10402000RU	TRACTUS MULTI PLATFORM	263 x 150	PLATFORM	brak	200 - 550	400 x 195

# ACCESSORIES

SIDES EXTENSION		COVERS				FRAME	
solid H350	net sides H400	flat	H400	H800	H1100	H800	H1100

# TRACTUS FLEX



**TRACTUS FLEX** - thanks to the use of leaf-spring suspension combined with shock absorbers, the trailer ensures stable handling and perfectly meets the requirements for transporting shock-sensitive goods such as fruit, flowers, or beehives.

## ADDITIONAL EQUIPMENT:

- frame with tarpaulin H-1100 mm, H-800 mm,
- flat tarpaulin,
- spare wheel bracket,
- spare wheel,
- solid steel side extensions,
- mesh side extensions.

## STANDARD EQUIPMENT:

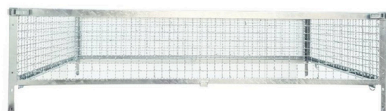
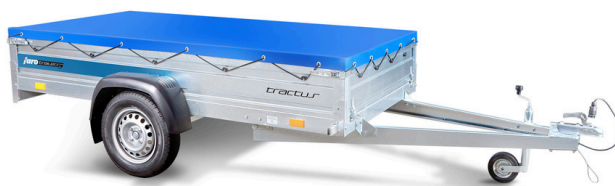
- axle mounted on two leaf springs with shock absorbers,
- V-type drawbar, bolted, bent from 2.5 mm thick class A sheet metal,
- trailer sideboards made of 1.25 mm thick galvanized class A sheet metal,
- front/rear boards - openable, solid steel or plywood-filled,
- sideboards - removable, solid steel or plywood-filled,
- coupling head 750 kg or 1300 kg by STEELPRESS, KNOTT or AL-KO,
- floor made of 9 mm anti-slip, waterproof plywood,
- wheels 155/70 R13 or 155/80 R13,
- load fastening brackets,
- tarpaulin support rollers.

CODE	Type	Cargo space dimensions (cm)	Side Type	Side height (cm)	Load capacity min. - max. (kg)	External dimensions of the trailer (cm)
1010000F	TRACTUS FLEX	205x125	METAL	35	225 - 575	345 x 170
1011000F	TRACTUS FLEX+	205x125	METAL-PLYWOOD	35	255 - 565	345 x 170
1012000AF	TRACTUS FLEX	205x125	METAL	45	220 - 570	345 x 170
1014000AF	TRACTUS FLEX+	205 x 125	METAL-PLYWOOD	45	210 - 560	345 x 170
1010000RF	TRACTUS FLEX PLATFORM	205 x 125	PLATFORM	x	235 - 585	345 x 170
10101000F	TRACTUS FLEX	205 x 140	METAL	35	212 - 562	345 x 185
10111000F	TRACTUS FLEX+	205 x 140	METAL-PLYWOOD	35	199 - 549	345 x 185
10121000AF	TRACTUS FLEX	205 x 140	METAL	45	215 - 565	345 x 185
10141000AF	TRACTUS FLEX+	205 x 140	METAL-PLYWOOD	45	205 - 555	345 x 185
10101000RF	TRACTUS FLEX PLATFORM	205 x 140	PLATFORM	x	225 - 575	345 x 185
10200000F	TRACTUS FLEX	220 x 125	METAL	35	220 - 570	360 x 170
10210000F	TRACTUS FLEX+	220 x 125	METAL-PLYWOOD	35	205 - 555	360 x 170
10220000AF	TRACTUS FLEX	220 x 125	METAL	45	210 - 560	360 x 170
10240000AF	TRACTUS FLEX+	220 x 125	METAL-PLYWOOD	45	200 - 550	360 x 170
10200000RF	TRACTUS FLEX PLATFORM	220 x 125	PLATFORM	x	230 - 580	360 x 170
10201000F	TRACTUS FLEX	220 x 140	METAL	35	198 - 548	360 x 185
10211000F	TRACTUS FLEX+	220 x 140	METAL-PLYWOOD	35	188 - 536	360 x 185
10221000F	TRACTUS FLEX	220 x 140	METAL	45	205 - 555	360 x 185
10241000F	TRACTUS FLEX+	220 x 140	METAL-PLYWOOD	45	195 - 545	360 x 185
10201000RF	TRACTUS FLEX PLATFORM	220 x 140	PLATFORM	x	215 - 565	360 x 185
10300000F	TRACTUS FLEX	236 x 125	METAL	35	215 - 565	376 x 170
10310000F	TRACTUS FLEX+	236 x 125	METAL-PLYWOOD	35	205 - 555	376 x 170
10320000AF	TRACTUS FLEX	236 x 125	METAL	45	215 - 565	376 x 170
10340000AF	TRACTUS FLEX+	236 x 125	METAL-PLYWOOD	45	195 - 545	376 x 170
10300000RF	TRACTUS FLEX PLATFORM	236 x 125	PLATFORM	x	215 - 565	376 x 170
10501000F	TRACTUS FLEX	250 x 140	METAL	35	195 - 545	381 x 185
10511000F	TRACTUS FLEX+	250 x 140	METAL-PLYWOOD	35	165 - 515	381 x 185
10521000F	TRACTUS FLEX	250 x 140	METAL	45	190 - 540	381 x 185

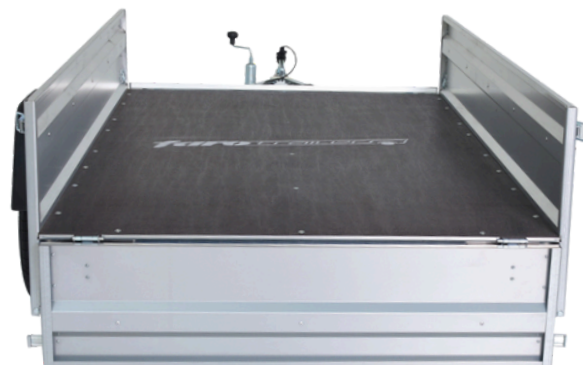
CODE	Type	Cargo space dimensions (cm)	Side Type	Side height (cm)	Load capacity min. - max. (kg)	External dimensions of the trailer (cm)
10541000F	TRACTUS FLEX+	250 x 140	METAL-PLYWOOD	45	155 - 505	381 x 185
10501000RF	TRACTUS FLEX PLATFORM	250 x 140	PLATFORM	x	205 - 555	381 x 185
10400000F	TRACTUS FLEX	263 x 125	METAL	35	205 - 555	400 x 170
10410000F	TRACTUS FLEX+	263 x 125	METAL-PLYWOOD	35	185 - 535	400 x 170
10420000AF	TRACTUS FLEX	263 x 125	METAL	45	195 - 545	400 x 170
10440000AF	TRACTUS FLEX+	263 x 125	METAL-PLYWOOD	45	180 - 530	400 x 170
10400000RF	TRACTUS FLEX PLATFORM	263 x 125	PLATFORM	x	215 - 565	400 x 170
10402000F	TRACTUS FLEX	263 x 150	METAL	35	180 - 530	400 x 195
10412000F	TRACTUS FLEX+	263 x 150	METAL-PLYWOOD	35	155 - 505	400 x 195
10422000F	TRACTUS FLEX	263 x 150	METAL	45	190 - 540	400 x 195
10442000F	TRACTUS FLEX+	263 x 150	METAL-PLYWOOD	45	145 - 495	400 x 195
10402000RF	TRACTUS FLEX PLATFORM	263 x 150	PLATFORM	x	200 - 550	400 x 195

# ACCESSORIES

SIDES EXTENSION		COVERS				FRAME	
solid H350	net sides H400	flat	H400	H800	H1100	H800	H1100



# PONDUS



**PONDUS** - a lightweight trailer designed for individual customers looking for a small, universal, and multifunctional trailer. The riveted-bolted structure makes it much easier to replace parts damaged during use. Standard equipment includes 4 lashing points for safe cargo transport.

## ADDITIONAL EQUIPMENT:

- frame with tarpaulin height 800 mm,
- flat tarp,
- complete steel side extensions
- mesh extensions.

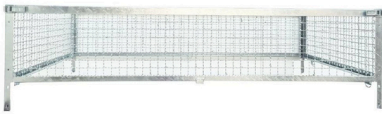
## STANDARD EQUIPMENT:

- trailer frame and drawbar distorted from 2.5 mm thick galvanized steel, class A,
- trailer sides H-320 mm,
- 1.25 mm thick galvanized steel sheet,
- front and back sides open,
- floor constructed from 9 mm thick anti-slip, waterproof plywood,
- wheels 155/70 R13 or 155/80 R13,
- 4 cargo securing handles

CODE	Type	Cargo space dimensions (cm)	Side Type	Side height (cm)	Load capacity min. - max. (kg)	External dimensions of the trailer (cm)
11200000	PONDUS	165 x 112	METAL	32	230 - 630	262 x 155
11300000	PONDUS	205 x 112	METAL	32	220 - 620	300 x 155
11400000	PONDUS	205 x 125	METAL	32	210 - 610	300 x 170
11430000	PONDUS	236 x 125	METAL	32	200 - 590	331 x 170
11404000M	PONDUS	263 x 130	METAL	32	180 - 580	357 x 175

# ACCESSORIES

SIDES EXTENSION		COVERS			FRAME
solid H350	net sides H400	flat	H400	H800	H800



# PONDUS MULTI



**PONDUS MULTI** - a lightweight, multifunctional trailer for individual users, ideal for everyday use in household and garden work. Equipped with a tilting drawbar, it allows for quick unloading of bulk and oversized materials. Its compact design combines the features of a small trailer with the versatility of transporting various loads – from wood and tools to bags of soil or gravel. The opening front and rear boards significantly simplify loading and unloading, improving ease of use. An additional advantage is the ability to store the empty trailer vertically on its rear board, saving space in the garage. A practical and reliable solution for anyone looking for mobile support in household tasks.

## ADDITIONAL EQUIPMENT:

- frame with tarpaulin height 800 mm,
- flat tarp,
- complete lateral extensions
- mesh extensions.

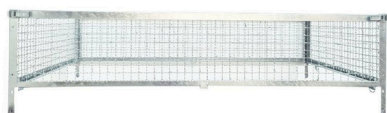
## STANDARD EQUIPMENT:

- trailer frame and drawbar constructed from 2.5 mm thick galvanized steel, class A,
- trailer sides H-320 mm, galvanized steel 1.25 mm thick,
- front/rear side access,
- floor constructed from 9 mm thick anti-slip, waterproof plywood,
- wheels 155/70 R13 or 155/80 R13
- Two hooks for fastening the load box to the drawbar.
- inclined drawbar

KOD	Typ przyczepy	Wymiary przestrzeni ładunkowej (cm)	Typ burty	Wysokość burty (cm)	Ładowność min. - max. (kg)	Wymiary zewnętrzne przyczepy (cm)	Dopuszczalna masa całkowita (dmc)
11404000U	PONDUS MULTI	263 x 130	METAL	32	180 - 580	357 x 175	750 KG
11430000U	PONDUS MULTI	236 x 125	METAL	32	200 - 590	331 x 170	750 KG
11300000U	PONDUS MULTI	205 x 112	METAL	32	220 - 620	300 x 155	750 KG
11200000U	PONDUS MULTI	165 x 112	METAL	32	230 - 630	262 x 155	750 KG
11400000U	PONDUS MULTI	205 x 125	METAL	32	210 - 610	300 x 170	750 KG

# ACCESSORIES

SIDES EXTENSION		COVERS			FRAME
solid H350	net sides H400	flat	H400	H800	H800



# SOLIDUS



**SOLIDUS** - a line of unbraked car trailers with external wheels, offering robust construction and universal application. This model uses a 750 kg or 1300 kg coupling head. The running gear consists of two unbraked torsion axles with a capacity of 750 kg or 1000 kg.

All sideboards are removable – either solid steel or plywood-filled – enabling the trailer to be transformed into a spacious platform, providing greater flexibility for loading and transporting unusual cargo. It can be easily adapted to individual needs and customized with additional accessories.

## ADDITIONAL EQUIPMENT:

- frame with tarpaulin H-1100 mm, H-800 mm,
- flat tarp,
- spare tire mount,
- replacement tire,
- 1000 kg unbraked axle by STEELPRESS featuring compact bearings (ideal for rental companies),
- complete steel side extensions
- mesh extensions.

## STANDARD EQUIPMENT:

- trailer frame constructed from 2.5 mm thick galvanized steel, class A,
- V-type drawbar, threaded, formed from 2.5 mm thick class A sheet metal,
- trailer sides constructed from 1.25 mm thick galvanized steel, class A,
- front/rear sides are operable, solid steel or filled with plywood
- detachable side panels,
- 750 kg or 1300 kg hitch head from STEELPRESS, KNOTT, or AL-KO.
- 2 unbraked axles 750 kg produced by STEELPRESS, KNOTT, or AL-KO,
- floor constructed from 9 mm thick anti-slip, waterproof plywood,
- wheels 155/80 R13, wheels 165/70 R13
- load securing grips,
- side rollers for tarpaulin,

CODE	Type	Cargo space dimensions (cm)	Side Type	Side height (cm)	Load capacity min. - max. (kg)	External dimensions of the trailer (cm)
12300000	SOLIDUS	236 x 125	METAL	35	270 - 520	376 x 170
12300000A	SOLIDUS	236 x 125	METAL	45	270 - 520	376 x 170
12310000	SOLIDUS+	236 x 125	METAL-PLYWOOD	35	260 - 510	376 x 170
12310000A	SOLIDUS+	236 x 125	METAL-PLYWOOD	45	250 - 500	376 x 170
12300000R	SOLIDUS PLATFORM	236 x 125	PLATFORM	X	280 - 530	376 x 170
12400000	SOLIDUS	263 x 125	METAL	35	260 - 510	400 x 170
12400000A	SOLIDUS	263 x 125	METAL	45	260 - 510	400 x 170
12410000	SOLIDUS+	263 x 125	METAL-PLYWOOD	35	250 - 500	400 x 170
12410000A	SOLIDUS+	263 x 125	METAL-PLYWOOD	45	240 - 490	400 x 170
12400000R	SOLIDUS PLATFORM	263 x 125	PLATFORM	X	270 - 520	400 x 170
12402000	SOLIDUS	263 x 150	METAL	35	240 - 490	400 x 195
12412000	SOLIDUS+	263 x 150	METAL-PLYWOOD	35	225 - 475	400 x 195
12402000A	SOLIDUS	263 x 150	METAL	45	230 - 480	400 x 195
12412000A	SOLIDUS+	263 x 150	METAL-PLYWOOD	45	220 - 470	400 x 195
12402000R	SOLIDUS PLATFORM	263 x 150	PLATFORM	X	250 - 500	400 x 195
12502000	SOLIDUS	300 x 150	METAL	35	220 - 470	436 x 195
12512000	SOLIDUS+	300 x 150	METAL-PLYWOOD	35	195 - 445	436 x 195
12502000A	SOLIDUS	300 x 150	METAL	45	200 - 450	436 x 195
12512000A	SOLIDUS+	300 x 150	METAL-PLYWOOD	45	170 - 420	436 x 195
12502000R	SOLIDUS PLATFORM	300 x 150	PLATFORM	X	230 - 480	436 x 195
12602000	SOLIDUS	330 x 150	METAL	35	200 - 450	466 x 195
12612000	SOLIDUS+	330 x 150	METAL-PLYWOOD	35	175 - 425	466 x 195
12602000R	SOLIDUS PLATFORM	330 x 150	PLATFORM	X	220 - 470	466 x 195
12503200	SOLIDUS	300 x 170	METAL	35	180 - 430	436 x 215
12513000	SOLIDUS+	300 x 170	METAL-PLYWOOD	35	150 - 400	436 x 215
12503000A	SOLIDUS	300 x 170	METAL	45	170 - 420	436 x 215
12513000A	SOLIDUS+	300 x 170	METAL-PLYWOOD	45	140 - 390	436 x 215
12503200R	SOLIDUS PLATFORM	300 x 170	PLATFORM	X	210 - 460	436 x 215

CODE	Type	Cargo space dimensions (cm)	Side Type	Side height (cm)	Load capacity min. - max. (kg)	External dimensions of the trailer (cm)
12603000	SOLIDUS	330 x 170	METAL	35	160 - 410	466 x 215
12613000	SOLIDUS+	330 x 170	METAL-PLYWOOD	35	130 - 400	466 x 215
12623000A	SOLIDUS	330 x 170	METAL	45	150 - 400	466 x 215
12643000A	SOLIDUS+	330 x 170	METAL-PLYWOOD	45	120 - 370	466 x 215
12603000R	SOLIDUS PLATFORM	330 x 170	PLATFORM	X	200 - 450	466 x 215

# ACCESSORIES

SIDES EXTENSION		COVERS				FRAME	
solid H350	net sides H400	flat	H400	H800	H1100	H800	H1100

# MAGICUS



**MAGICUS** - a multifunctional trailer with wheels positioned under the cargo box, suitable for all types of applications. Thanks to the use of premium materials and the absence of design shortcuts, the trailer is strong and durable.

The running gear consists of two unbraked torsion axles with a capacity of 750 kg or 1000 kg.

## ADDITIONAL EQUIPMENT:

- frame with tarpaulin H-800 and H-1100 mm, additional dimensions available upon request,
- flat tarp,
- spare tire mount,
- replacement tire,
- 1000 kg unbraked axle by STEELPRESS featuring compact bearings (ideal for rental companies),
- full steel side extensions (option for reinforcement with plywood),
- mesh extensions.

## STANDARD EQUIPMENT:

- trailer frame constructed from 2.5 mm thick galvanized steel, class A,
- V-type drawbar, threaded, formed from 2.5 mm thick class A sheet metal,
- trailer sides: constructed from 1.25 mm thick galvanized sheet metal, class A, featuring an opening/removable design, solid/steel/filled with plywood
- floor constructed from 12 mm thick anti-slip, waterproof plywood,
- 2 unbraked axles 750 kg from STEELPRESS, KNOTT, or AL-KO.
- polyethylene or metallic mudguards,
- wheels 165/70 R13,
- 6 load securing handles for one ton of cargo,
- side rollers for tarpaulin,

CODE	Type	Cargo space dimensions (cm)	Side Type	Side height (cm)	Load capacity min. - max. (kg)	External dimensions of the trailer (cm)
13600000	Magicus	330 x 150	METAL	35	155 - 405	470 x 157
13500000R	Magicus Platforma	300 x 150	PLATFORM	X	200 - 450	440 x 157
13402000	Magicus	263 x 150	METAL	35	200 - 450	405 x 157
13402000R	Magicus Platforma	263 x 150	PLATFORM	X	220 - 470	405 x 157
13600000A	Magicus+	330 x 150	METAL-PLYWOOD	35	130 - 380	470 x 157
13500000A	Magicus+	300 x 150	METAL-PLYWOOD	35	150 - 400	440 x 157
13412000	Magicus+	263 x 150	METAL-PLYWOOD	35	175 - 425	405 x 157
13500000	Magicus	300 x 150	METAL	35	175 - 425	440 x 157
13600000R	Magicus Platforma	330 x 150	PLATFORM	X	180 - 430	470 x 157

# ACCESSORIES

SIDES EXTENSION		COVERS			FRAME	
solid H350	net sides H400	flat	H400	H800	H800	H1100

# MAGICUS MAX



**MAGICUS MAX**- a line of braked trailers offered with GVW from 1000 kg to 2700 kg, depending on configuration. The robust riveted-bolted structure ensures many years of trouble-free use and allows for easy self-servicing of worn parts. A versatile trailer suitable both for business and for demanding individual users.

## ADDITIONAL EQUIPMENT:

- frame with tarpaulin H-1100 mm, H-800 mm
- sheet tarpaulin
- spare tire with mount
- mesh extensions
- full steel or plywood side panels
- access ramps 2.2 m, 350 kg

## STANDARD EQUIPMENT:

- drawbar with AL-KO or KNOTT certification
- Trailer sides constructed from 1.25 mm thick galvanized sheet metal, Class A galvanization.
- front/rear/side panels openable/removable
- solid or plywood-filled side panels
- floor constructed from 12 mm anti-slip, waterproof plywood
- 2 axles with brakes AL.-KO or KNOTT
- metal fenders, handle-equipped jockey wheel
- 8 load securing handles within the frame
- side rollers for tarpaulin

CODE	Type	Cargo space dimensions (cm)	Side Type	Side height (cm)	Load capacity min. - max. (kg)	External dimensions of the trailer (cm)	Permissible total weight min. - max. (kg)
16502000-14	MAGICUS MAX	300 x 161	METAL	35	410 - 810	442 x 167	1000 - 1400
16512000-14	MAGICUS+ MAX	300 x 161	METAL-PLYWOOD	35	380 - 780	442 x 167	1000 - 1400
16502000R-14	MAGICUS MAX PLATFORM	300 x 161	PLATFORM	X	440 - 840	442 x 167	1000 - 1400
16502000-20	MAGICUS MAX	300 x 161	METAL	35	810 - 1410	442 x 167	1400 - 2000
16512000-20	MAGICUS+ MAX	300 x 161	METAL-PLYWOOD	35	780 - 1380	442 x 167	1400 - 2000
16502000R-20	MAGICUS MAX PLATFORM	300 x 161	PLATFORM	X	840 - 1440	442 x 167	1400 - 2000
16502000-27	MAGICUS MAX	300 x 161	METAL	X	1410 - 2110	442 x 167	2000 - 2700
16512000-27	MAGICUS+ MAX	300 x 161	METAL-PLYWOOD	35	1380 - 2080	442 x 167	2000 - 2700
16502000R-27	MAGICUS MAX PLATFORM	300 x 161	PLATFORM	X	1440 - 2140	442 x 167	2000 - 2700
16402000-14	MAGICUS MAX	263 X 161	METAL	35	460 - 860	405 x 167	1000 - 1400
16412000-14	MAGICUS+ MAX	263 X 161	METAL-PLYWOOD	35	440 - 840	405 x 167	1000 - 1400
16402000R-14	MAGICUS MAX PLATFORM	263 X 161	PLATFORM	X	490 - 890	405 x 167	1000 - 1400
16402000-20	MAGICUS MAX	263 X 161	METAL	35	860 - 1460	405 x 167	1400 - 2000
16412000-20	MAGICUS+ MAX	263 X 161	METAL-PLYWOOD	35	840 - 1440	405 x 167	1400 - 2000
16402000R-20	MAGICUS MAX PLATFORM	263 X 161	PLATFORM	X	890 - 1490	405 x 167	1400 - 2000
16402000-27	MAGICUS MAX	263 X 161	METAL	35	1460 - 2160	405 x 167	2000 - 2700
16412000-27	MAGICUS+ MAX	263 X 161	METAL-PLYWOOD	35	1440 - 2140	405 x 167	2000 - 2700
16402000R-27	MAGICUS MAX PLATFORM	263 X 161	PLATFORM	X	1490 - 2190	405 x 167	2000 - 2700
16602000 -14	MAGICUS MAX	330 x 161	METAL	35	380 - 780	472 x 167	1000 - 1400
16612000-14	MAGICUS+ MAX	330 x 161	METAL-PLYWOOD	35	350 - 750	472 x 167	1000 - 1400
16602000R -14	MAGICUS MAX PLATFORM	330 x 161	PLATFORM	X	410 - 810	472 x 167	1000 - 1400
16602000 -20	MAGICUS MAX	330 x 161	METAL	35	780 - 1380	472 x 167	1400 - 2000
16612000-20	MAGICUS+ MAX	330 x 161	METAL-PLYWOOD	35	750 - 1350	472 x 167	1400 - 2000
16602000R -20	MAGICUS MAX PLATFORM	330 x 161	PLATFORM	X	810 - 1410	472 x 167	1400 - 2000
16602000 -27	MAGICUS MAX	330 x 161	METAL	35	1380 - 2080	472 x 167	2000 - 2700
16612000-27	MAGICUS+ MAX	330 x 161	METAL-PLYWOOD	35	1350 - 2050	472 x 167	2000 - 2700
16602000R -27	MAGICUS MAX PLATFORM	330 x 161	PLATFORM	X	1410 - 2110	472 x 167	2000 - 2700

# ACCESSORIES

SIDES EXTENSION		COVERS				FRAME	
solid H350	net sides H400	flat	H400	H800	H1100	H800	H1100

# SOLIDUS MAX



**SOLIDUS MAX** - a line of tandem-axle braked trailers with GVW ranging from 1000 kg to 2700 kg, depending on configuration. The high-quality braking system by KNOTT or AL-KO guarantees driving comfort. A multipurpose trailer designed for business as well as demanding private users.

## ADDITIONAL EQUIPMENT:

- frame with tarpaulin H-1100 mm, H-800 mm
- flat tarp
- spare tire with mount
- mesh extensions
- complete steel side extensions

## STANDARD EQUIPMENT:

- trailer frame constructed from 2.5 mm thick galvanized steel, class A galvanization
- drawbar with AL-KO or KNOTT certification
- Trailer sides constructed from 1.25 mm thick galvanized sheet metal, Class A galvanization.
- front/rear sides adjustable, solid metal or constructed with plywood
- detachable side panels, entirely metal or filled with plywood
- AL-KO or KNOTT trailer brake system
- floor constructed from 12 mm anti-slip, waterproof plywood
- Two axles equipped with brakes from AL-KO or KNOTT.
- plastic bumpers
- Six cargo tie-down points located in the floor.
- side rollers for tarpaulin

KOD	Typ przyczepy	Wymiary przestrzeni ładunkowej (cm)	Typ burty	Wysokość burty (cm)	Ładowność min. - max. (kg)	Wymiary zewnętrzne przyczepy (cm)	DMC
15400101-14	SOLIDUS MAX	263 x 125	METAL	35	670 - 1070	405 x 176	1000 - 1400
15400101A-14	SOLIDUS+ MAX	263 x 125	METAL-PLYWOOD	35	640 - 1040	405 x 176	1000 - 1400
15400100-14R	SOLIDUS MAX PLATFORM	263 x 150	PLATFORM	X	640 - 1040	405 - 201	1000 - 1400
15400101-20	SOLIDUS MAX	263 x 125	METAL	35	1070 - 1670	405 x 176	1400 - 2000
15400100A-20	SOLIDUS+ MAX	263 x 150	METAL-PLYWOOD	35	1000 - 1600	405 - 201	1400 - 2000
15400100-20R	SOLIDUS MAX PLATFORM	263 x 150	PLATFORM	X	1040 - 1640	405 - 201	1400 - 2000
15400101-27	SOLIDUS MAX	263 x 125	METAL	35	1670 - 2370	405 x 176	2000 - 270
15400101A-27	SOLIDUS+ MAX	263 x 125	METAL-PLYWOOD	35	1640 - 2340	405 x 176	2000 - 2700
15400101-27R	SOLIDUS MAX PLATFORM	263 x 125	PLATFORM	X	1690 - 2390	405 x 176	2000 - 2700
15400100-14	SOLIDUS MAX	263 x 150	METAL	35	620 - 1020	405 - 201	1000 - 1400
15400100A-14	SOLIDUS+ MAX	263 x 150	METAL-PLYWOOD	35	600 - 1000	405 - 201	1000 - 1400
15400101-14R	SOLIDUS MAX PLATFORM	263 x 125	PLATFORM	X	690 - 1090	405 x 176	1000 - 1400
15400100-20	SOLIDUS MAX	263 x 150	METAL	35	1020 - 1620	405 - 201	1400 - 2000
15400101A-20	SOLIDUS+ MAX	263 x 125	METAL-PLYWOOD	35	1040 - 1690	405 x 176	1400 - 2000
15400101-20R	SOLIDUS MAX PLATFORM	263 x 125	PLATFORM	X	1090 - 1690	405 x 176	1400 - 2000
15400100-27	SOLIDUS MAX	263 x 150	METAL	35	1620 - 2320	405 - 201	2000 - 2700
15400100A-27	SOLIDUS+ MAX	263 x 150	METAL-PLYWOOD	35	1600 - 2300	405 - 201	2000 - 2700
15400100-27R	SOLIDUS MAX PLATFORM	263 x 150	PLATFORM	X	1640 - 2340	405 - 201	2000 - 2700
15500100-14	SOLIDUS MAX	300 x 150	METAL	35	610 - 1010	442 x 201	1000 - 1400
15500100A-14	SOLIDUS+ MAX	300 x 150	METAL-PLYWOOD	35	590 - 990	442 x 201	1000 - 1400
15500100-14R	SOLIDUS MAX PLATFORM	300 x 150	PLATFORM	X	630 - 1030	442 x 201	1000 - 1400
15500100-20	SOLIDUS MAX	300 x 150	METAL	35	1010 - 1610	442 x 201	1400 - 2000
15500100A-20	SOLIDUS+ MAX	300 x 150	METAL-PLYWOOD	35	990 - 1590	442 x 201	1400 - 2000
15500100-20R	SOLIDUS MAX PLATFORM	300 x 150	PLATFORM	X	1030 - 1630	442 x 201	1400 - 2000
15500100-27	SOLIDUS MAX	300 x 150	METAL	35	1610 - 2310	442 x 201	2000 - 2700
15500100A-27	SOLIDUS+ MAX	300 x 150	METAL-PLYWOOD	35	1590 - 2290	442 x 201	2000 - 2700
15500100-27R	SOLIDUS MAX PLATFORM	300 x 150	PLATFORM	X	1630 - 2330	442 x 201	2000 - 2700
15600100-14	SOLIDUS MAX	330 x 150	METAL	35	590 - 990	472 x 201	1000 - 1400

KOD	Typ przyczepy	Wymiary przestrzeni ładunkowej (cm)	Typ burty	Wysokość burty (cm)	Ładowność min. - max. (kg)	Wymiary zewnętrzne przyczepy (cm)	DMC
15600100A-14	SOLIDUS+ MAX	330 x 150	METAL-PLYWOOD	35	560 - 960	472 x 201	1000 - 1400
15600100-14R	SOLIDUS MAX PLATFORM	330 x 150	PLATFORM	X	610 - 1010	472 x 201	1000 - 1400
15600100-20	SOLIDUS MAX	330 x 150	METAL	35	990 - 1590	472 x 201	1400 - 2000
15600100A-20	SOLIDUS+ MAX	330 x 150	METAL-PLYWOOD	35	960 - 1560	472 x 201	1400 - 2000
15600100-20R	SOLIDUS MAX PLATFORM	330 x 150	PLATFORM	X	1010 - 1610	472 x 201	1400 - 2000
15600100-27	SOLIDUS MAX	330 x 150	METAL	35	1590 - 2290	472 x 201	2000 - 2700
15600100A-27	SOLIDUS+ MAX	330 x 150	METAL-PLYWOOD	35	1560 - 2260	472 x 201	2000 - 2700
15600100-27R	SOLIDUS MAX PLATFORM	330 x 150	PLATFORM	X	1610 - 2310	472 x 201	2000 - 2700

# ACCESSORIES

SIDES EXTENSION		COVERS				FRAME	
solid H350	net sides H400	flat	H400	H800	H1100	H800	H1100

# BOAT TRAILERS



## CORROSION RESISTANCE PROTECTION

STEEL COMPONENTS ARE COATED WITH ZINC OR CATHOPHORESIS, LEADING TO A SIGNIFICANT DEGREE OF CORROSION RESISTANCE.

## FRAME

THE TRAILERS ARE CONSTRUCTED FROM COLD-BENT STEEL PROFILES FEATURING A RECTANGULAR CROSS-SECTION.

## LIGHTING

12V ELECTRICAL SETUP, 7-PIN CONNECTOR ADHERING TO TRAFFIC REGULATIONS  
REMOVABLE AND TILTABLE REAR LIGHTING PANEL THAT ALLOWS FOR LOADING AND UNLOADING DIRECTLY IN THE WATER

## ROLLERS, SLIDES, GRIPS AND BRACKETS

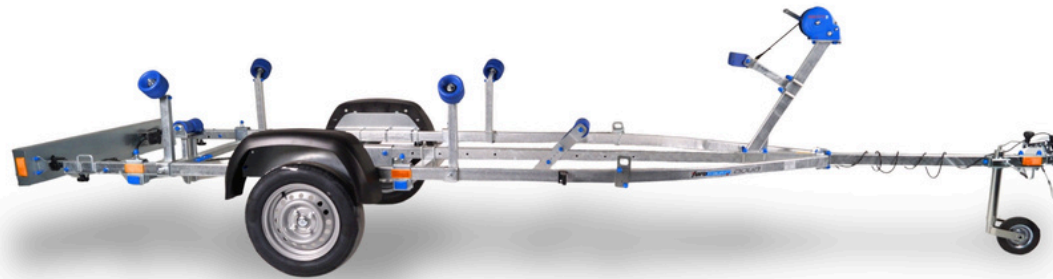
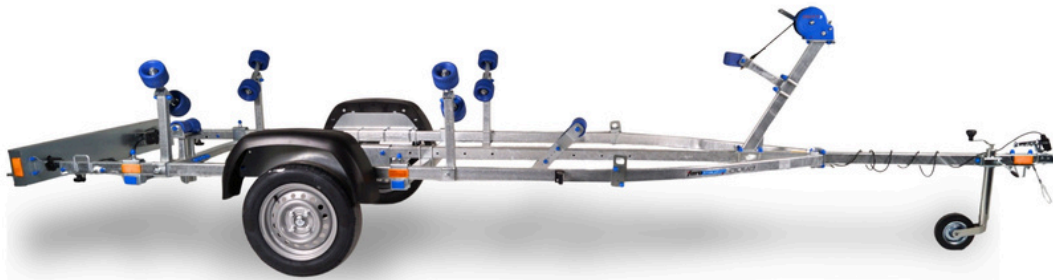
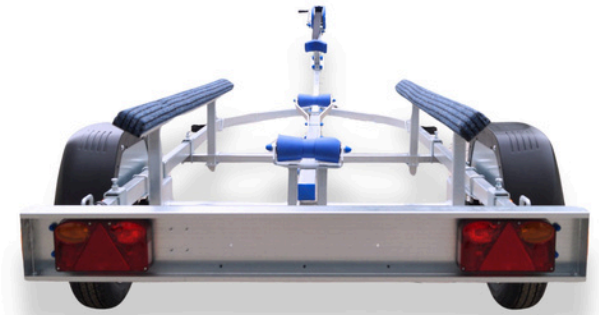
ADJUSTABLE TRAILER COMPONENTS ENABLE YOU TO SUPPORT LOADS OF VARIOUS TYPES AND SIZES.

## COMPONENTS

THE TRAILERS ARE CONSTRUCTED USING COMPONENTS FROM WELL-KNOWN COMPANIES: STEELPRESS, KNOTT, AL-KO, FRISTOM, AND ASPICK.



# AQUA



**AQUA** - a trailer adapted for transporting both boats and jet skis, equipped with side rollers or bunks. Numerous adjustable elements allow for the transport of watercraft of various sizes. The rear lighting panel is easily removable, enabling direct launching and retrieval of boats in the water.

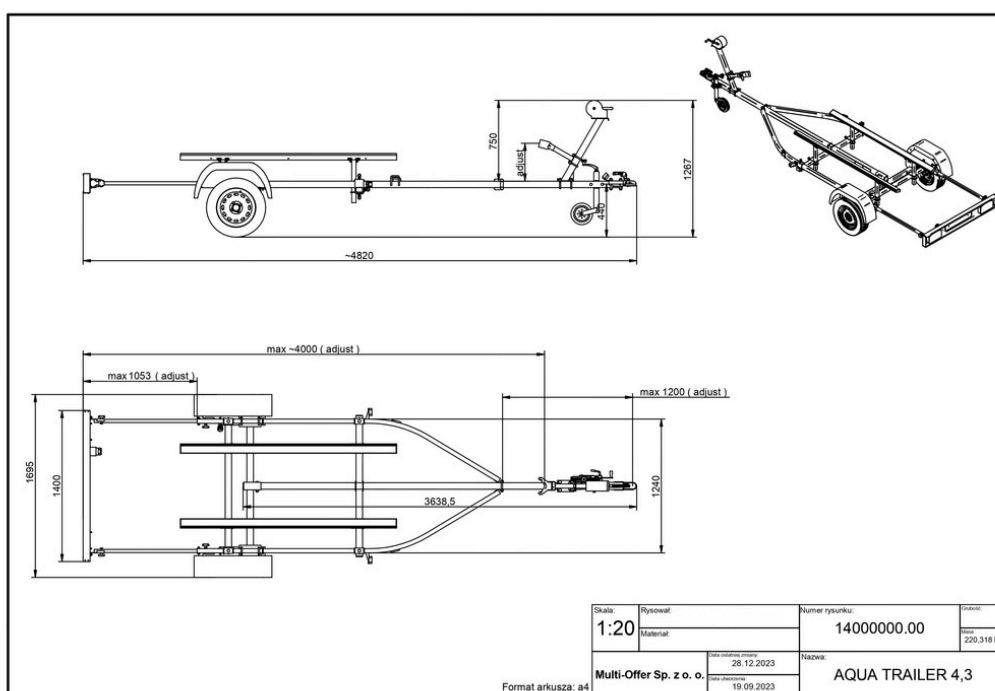
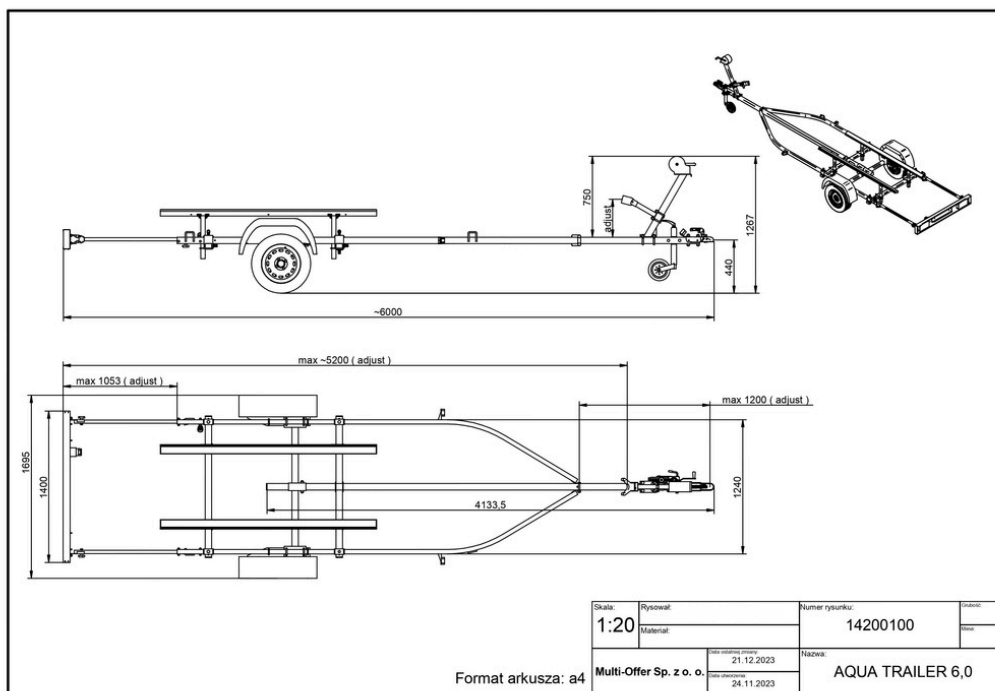
## STANDARD EQUIPMENT:

- slides for personal watercraft or bottom rollers
- one or two keel rollers,
- lower rollers,
- removable adjustable rear panel,
- seat belt anchorage locations,
- 750 kg axle, water-resistant, adjustable,

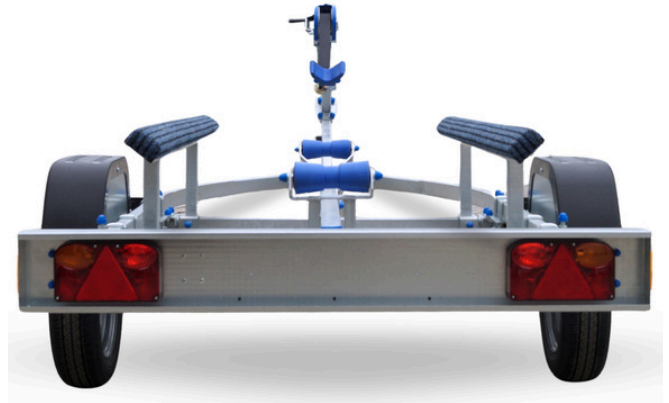
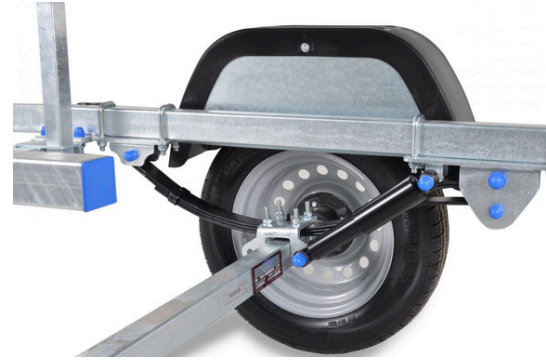
## ADDITIONAL EQUIPMENT:

- replacement tire,
- double-sided rollers

CODE	Trailer type	Trailer model	Equipment
14200100	AQUA	AQUA 5.2 SLIDE	Adjustable 2 m side bunks, adjustable keel rollers, bow post, winch with 450 kg strap
14100100	AQUA	AQUA 2.8 SLIDE	Adjustable 1.5 m side bunks, adjustable keel rollers, bow post, winch with 450 kg strap
14000100	AQUA	AQUA 4.3 SLIDE	Adjustable 2 m side bunks, adjustable keel rollers, bow post, winch with 450 kg strap
14200000	AQUA	AQUA 5.2 ROLLERS	Adjustable side rollers, adjustable keel rollers, bow post, winch with 450 kg strap
14100000	AQUA	AQUA 2.8 ROLLERS	Adjustable side rollers, adjustable keel rollers, bow post, winch with 450 kg strap
14000000	AQUA	AQUA 4.3 ROLLERS	Adjustable side rollers, adjustable keel rollers, bow post, winch with 450 kg strap



# AQUA FLEX



**Aqua Flex** - a trailer for transporting boats or jet skis, equipped with leaf-spring suspension and shock absorbers. Adjustable keel rollers and side bunks make it easy to adapt the trailer to different sizes and models of watercraft.

## ADDITIONAL EQUIPMENT:

- replacement tire,
- dual rollers

## STANDARD EQUIPMENT:

- side rollers or slides
- removable adjustable rear panel,
- Four belt attachment points,
- 750 kg axle, water-resistant, adjustable,
- spring suspension featuring a damping shock absorber
- 2 bottom rolls

CODE	Trailer type	Trailer model	Equipment
14000100F	AQUA FLEX	AQUA FLEX 4.3 SLIDE	Adjustable 2 m side bunks, adjustable keel rollers, bow post, winch with 450 kg strap
14200100F	AQUA FLEX	AQUA FLEX 5.2 SLIDE	Adjustable 2 m side bunks, adjustable keel rollers, bow post, winch with 450 kg strap
14000000F	AQUA FLEX	AQUA FLEX 4.3 ROLLERS	Adjustable side rollers, adjustable keel rollers, bow post, winch with 450 kg strap
14200000F	AQUA FLEX	AQUA FLEX 5.2 ROLLERS	Adjustable side rollers, adjustable keel rollers, bow post, winch with 450 kg strap

# AQUA TOP



**AQUA TOP** - a high-quality trailer designed for the transportation of boats, jet skis, or kayaks. Rear LED lights mounted on pivoting arms facilitate launching without the need to remove the rear beam. The frame components are safeguarded with a cataphoretic coating and completed with a black powder coat.

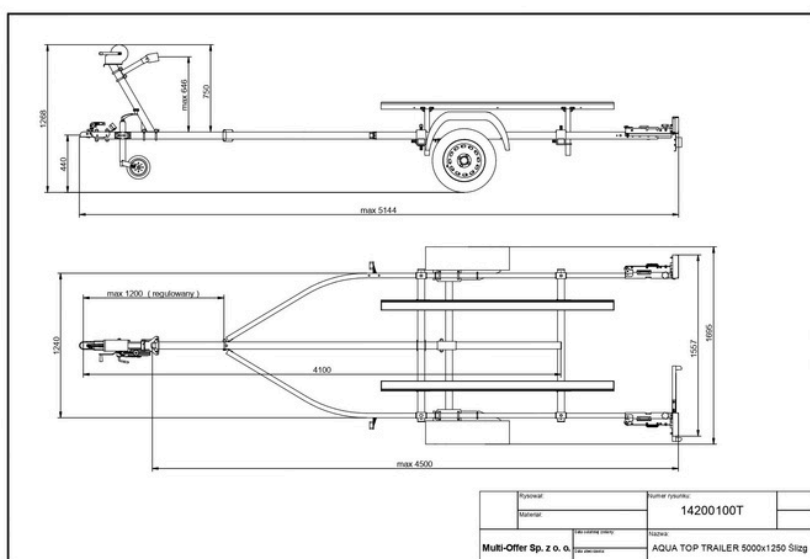
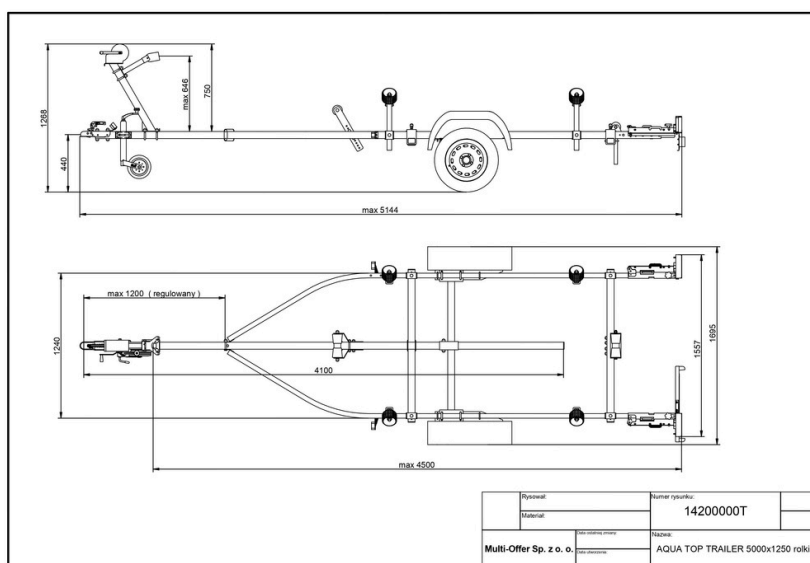
## ADDITIONAL EQUIPMENT:

- replacement tire
- dual side rollers

## STANDARD EQUIPMENT:

- side rollers or slides
- bottom rollers
- rear-mounted arms
- four belt attachment points,
- 750 kg axle, water-resistant, adjustable,
- refined aluminum wheels
- black powder coating
- frame safeguarded with cataphoretic coating
- IP68 class waterproof LED lamps

CODE	Trailer type	Trailer model	Equipment
14100000T	AQUA TOP	AQUA TOP 2.8 ROLLERS	Adjustable side rollers, adjustable keel rollers, bow post, winch with 450 kg strap
14000000T	AQUA TOP	AQUA TOP 4.3 ROLLERS	Adjustable 2 m side bunks, adjustable keel rollers, bow post, winch with 450 kg strap
14200100T	AQUA TOP	AQUA TOP 5.2 SLIDE	Adjustable side rollers, adjustable keel rollers, bow post, winch with 450 kg strap
14100100T	AQUA TOP	AQUA TOP 2.8 SLIDE	Adjustable side rollers, adjustable keel rollers, bow post, winch with 450 kg strap
14200000T	AQUA TOP	AQUA TOP 5.2 ROLLERS	Adjustable 2 m side bunks, adjustable keel rollers, bow post, winch with 450 kg strap
14000100T	AQUA TOP	AQUA TOP 4.3 SLIDE	Adjustable 1.5 m side bunks, adjustable keel rollers, bow post, winch with 450 kg strap



# AQUA TOP FLEX



**Aqua Top Flex** – a high-quality trailer designed for the transportation of boats or jet skis, featuring a spring suspension and a shock absorber. The frame parts are safeguarded with a cataphoretic coating and completed with a black powder finish.

## ADDITIONAL EQUIPMENT:

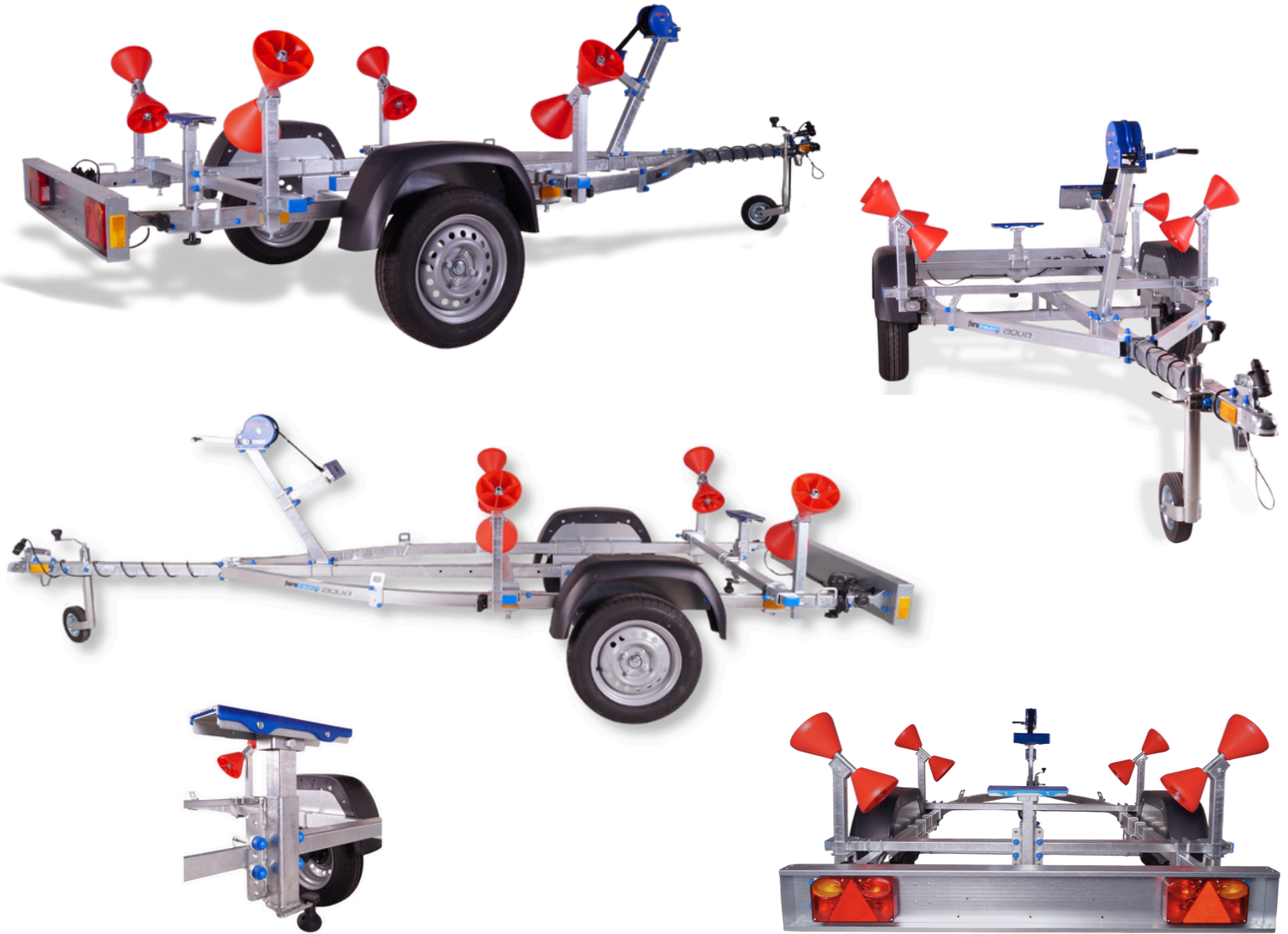
- replacement tire
- double-sided rollers

## STANDARD EQUIPMENT:

- side rollers or slides
- bottom rollers
- rear-mounted arms
- Four belt attachment points,
- 750 kg axle, water-resistant, adjustable,
- refined aluminum wheels
- black powder coating
- frame safeguarded with cataphoretic coating
- IP68 class waterproof LED lamps
- spring suspension featuring a damping shock absorber

CODE	Trailer type	Trailer model	Equipment
14200000TF	AQUA TOP	AQUA TOP FLEX 5.2 ROLKI	Adjustable side rollers, adjustable keel rollers, bow post, winch with 450 kg strap
14000000TF	AQUA TOP	AQUA TOP FLEX 4.3 ROLKI	Adjustable 2 m side bunks, adjustable keel rollers, bow post, winch with 450 kg strap
14200100TF	AQUA TOP	AQUA TOP FLEX 5.2 ŚLIZGI	Adjustable 2 m side bunks, adjustable keel rollers, bow post, winch with 450 kg strap
14200100TF	AQUA TOP	AQUA TOP FLEX 4.3 ŚLIZGI	"Adjustable side rollers, adjustable keel rollers, bow post, winch with 450 kg strap"

# AQUA PONTON



**AQUA PONTON** - a trailer specifically engineered for the transportation of pontoons and boats. It features double conical rollers, adjustable rear supports, and a flat support on the stem, allowing for adaptation to different sizes and types of watercraft.

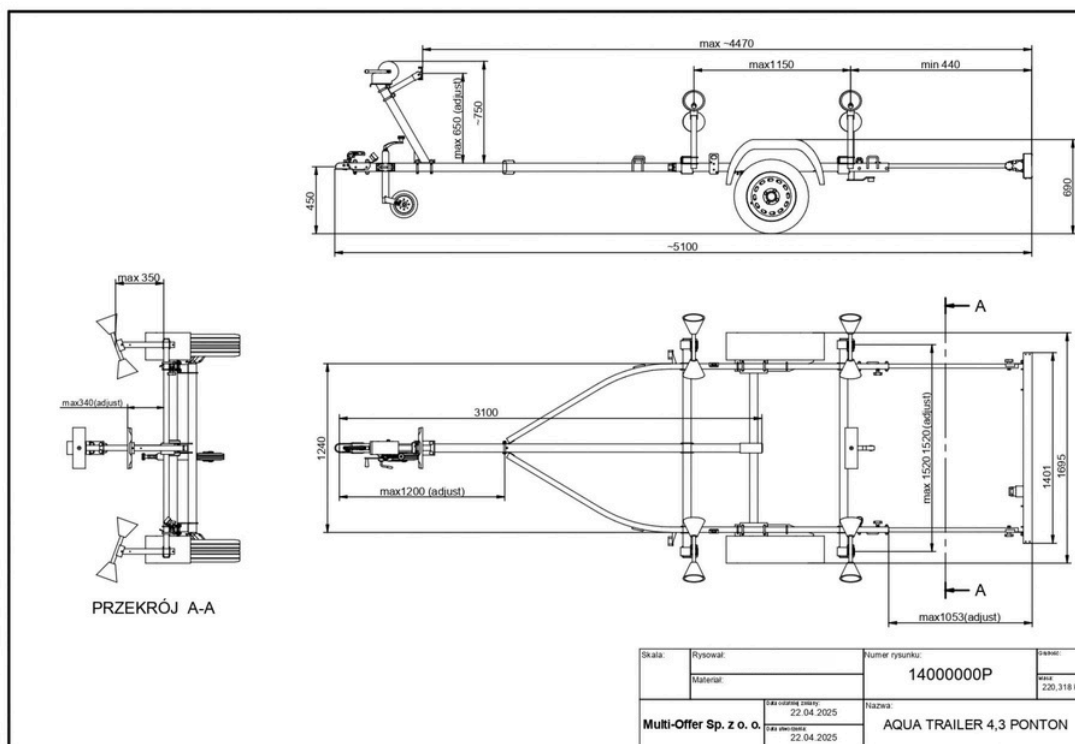
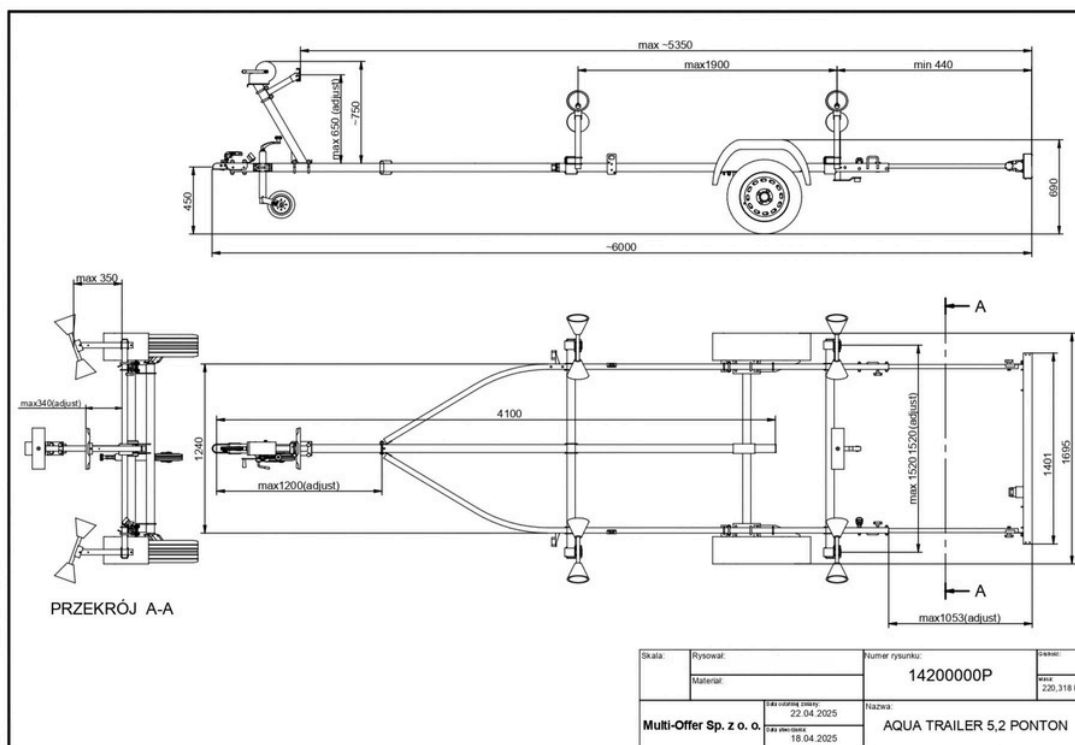
## ADDITIONAL EQUIPMENT:

- replacement tire

## STANDARD EQUIPMENT:

- Four double-sided rollers featuring a cone design,
- adjustable height flat rear support,
- bow support,
- removable adjustable rear lighting panel,
- Four belt attachment points,
- 750 kg axle, water-resistant, adjustable,

CODE	Trailer type	Trailer model	Equipment
14200000P	AQUA PONTON	AQUA PONTON 5.2	Adjustable double side rollers, adjustable keel support, bow post with winch
14000000P	AQUA PONTON	AQUA PONTON 4.3	Adjustable double side rollers, adjustable keel support, bow post with winch



# SPECIAL TRAILERS



## CORROSION RESISTANCE PROTECTION

STEEL COMPONENTS ARE COATED WITH A 275G/M2 ZINC LAYER (CLASS A), PROVIDING A SIGNIFICANT DEGREE OF RESISTANCE TO CORROSION AND OXIDATION.

## RAMA

ARE CONSTRUCTED FROM HIGH-STRENGTH COLD-BENT SHEET METAL AND STEEL PROFILES FEATURING A RECTANGULAR CROSS-SECTION.

## LIGHTING

12V ELECTRICAL SETUP, 7 OR 13-PIN CONNECTOR IN ACCORDANCE WITH ROAD TRAFFIC REGULATIONS

## FLOOR

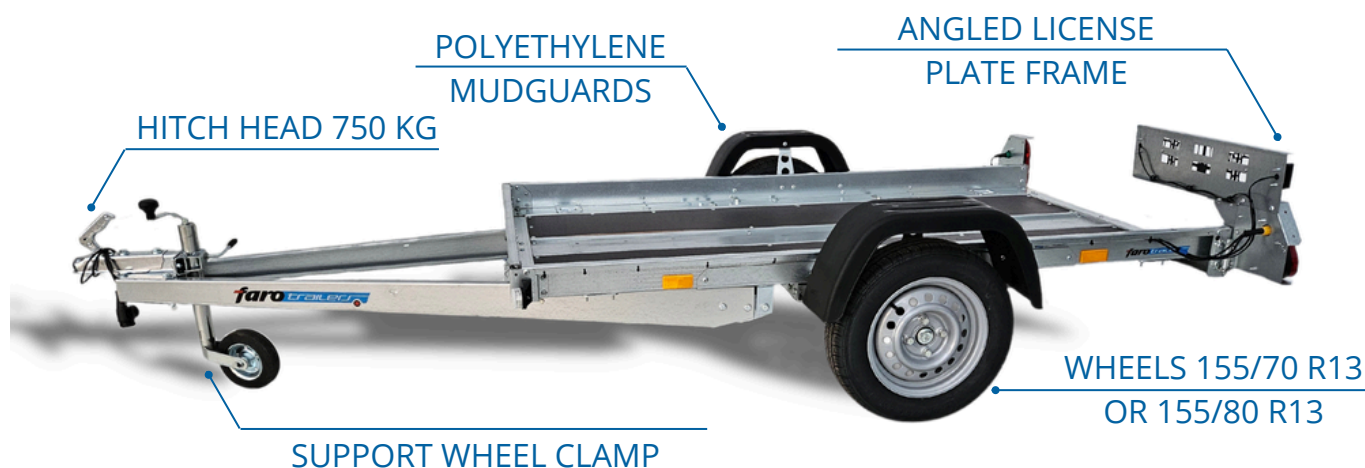
COMPOSED OF ANTI-SLIP, WATERPROOF PLYWOOD OR ALUMINUM SHEET

## LOAD CAPACITY 750 KG

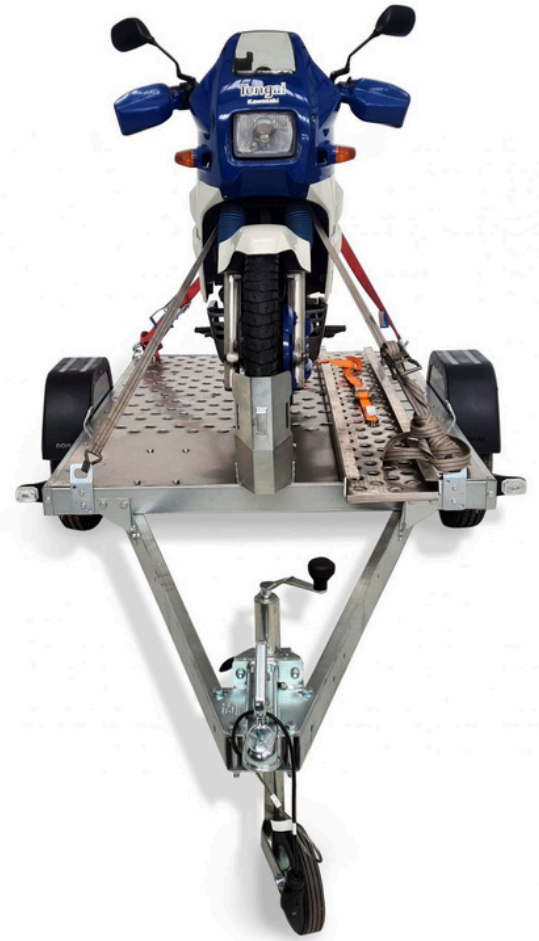
THE TRAILER IS DESIGNED TO CARRY LOADS OF DIFFERENT TYPES AND SIZES.

## COMPONENTS

THE TRAILERS ARE CONSTRUCTED FROM PARTS SOURCED FROM WELL-KNOWN COMPANIES SUCH AS STEELPRESS, KNOTT, OR AL-KO.



# AMICUS



**AMICUS-** is a versatile platform created for the transportation of motorcycles and other lightweight vehicles, including quads and ride-on mowers. The flooring consists of perforated aluminum sheet metal, which provides an attractive appearance, an efficient cargo securing system, and the capability to wash the cargo directly on the trailer.

## ADDITIONAL EQUIPMENT:

- motorcycle front wheel bracket
- aluminum ramp 2.2 meters
- floor load securing clamps

## STANDARD EQUIPMENT:

- trailer frame and drawbar distorted from 2.5 mm thick galvanized steel, class A,
- 750 kg hitch head from STEELPRESS, KNOTT, ALKO,
- 1.25 mm thick galvanized steel sheet,
- floor constructed from 4 mm perforated aluminum sheet
- 6 cargo tie down points
- wheels 155/70 R13 or 155/80 R13

CODE	Trailer type	Cargo space dimensions (cm)	Load capacity min. - max. (kg)	Trailer external dimensions (cm)
1010000MQ	AMICUS	205 x 125	230 - 580	345 - 168
10501000MQ	AMICUS	205 x 140	250 - 600	385 - 183

# VIARUS



**VIARUS** - a lightweight platform featuring a tilting drawbar and power steering. Two gas springs. Perfect for transporting vehicles like motorcycles and quads. Its straightforward, lightweight design and balanced structure facilitate easy loading and unloading. Furthermore, it features vibration dampers, enhancing the overall operation to be more enjoyable and effortless than ever.

## ADDITIONAL EQUIPMENT:

- spare wheel holder with wheel,
- wheel chock

## STANDARD EQUIPMENT:

- trailer frame and drawbar distorted from 2.5 mm thick galvanized steel, class A,
- floor constructed from 12mm waterproof and anti-slip plywood, manufactured in Poland,
- wheels 155/70R13,
- Eight cargo tie down,
- tilted drawbar featuring two hooks,
- front position illumination in LED technology,
- Two gas springs to aid in tilting and lowering,
- tilted arm with license plate
- winch installation bracket

CODE	Trailer type	Cargo space dimensions (cm)	Load capacity min. - max. (kg)	Trailer external dimensions (cm)
17501000	Viarus	250 x 145	350-750	388 - 199
17502000	Viarus	300 x 175	350-750	448 - 225

# VIARUS ONE



**VIARUS ONE** - A platform designed specifically for the transportation of vehicles like motorcycles, quads, and lawnmowers. Its straightforward and balanced design facilitates effortless loading and unloading. It features a trough that aids in the easy centering and securing of two-wheeled vehicles.

## ADDITIONAL EQUIPMENT:

- spare wheel holder with wheel,
- wheel chock

## STANDARD EQUIPMENT:

- The trailer frame and drawbar are constructed from 2.5 mm thick galvanized sheet metal, classified as A.
- The flooring consists of 12mm waterproof and anti-slip plywood, manufactured in Poland.
- Inclined drawbar with coupling,
- Inclined arm with registration plate,
- Front position illumination in LED technology
- 4 cargo tie down points
- Gutter for convenient alignment
- wheel immobilizer

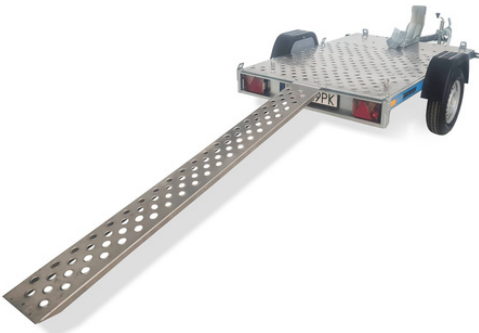
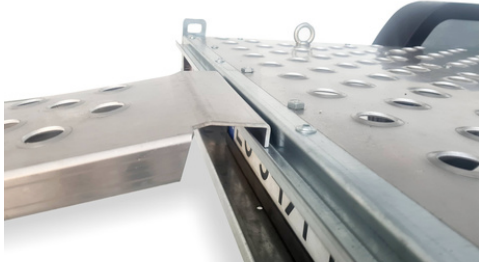
CODE	Trailer type	Cargo space dimensions (cm)	Load capacity min. - max. (kg)	Trailer external dimensions (cm)
17200000	Viarus One	220 x 112	350-750	358 - 162

# ACCESSORIES

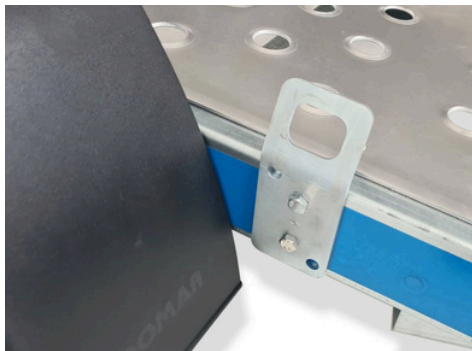
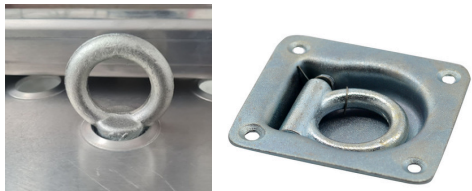
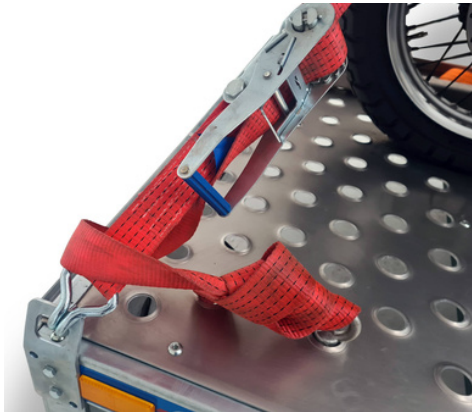
## FOR SPECIAL TRAILERS

### RAMP

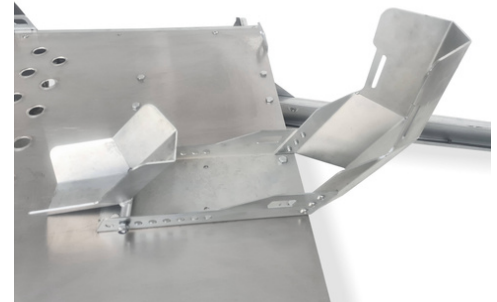
220x20cm, weight limit 350kg



### FLOOR BRACKETS



### WHEEL CHOCK



Trailer type	STANDARD EQUIPMENT:		ADDITIONAL EQUIPMENT:	
	Ramp	wheel chock	Ramp	wheel chock
VIARUS ONE	Not applicable	yes	Not applicable	yes
VIARUS	Not applicable	x	Not applicable	yes
AMICUS	x	yes	yes	yes

# Replacement COMPONENTS



Since 1967

## LIGHTING



## FASTENERS AND PIVOTS



## WHEELS AND BRACKETS



## WINCH AND ROLLERS



We possess all the necessary spare parts for our trailers.

# PROMOTIONAL MATERIALS



POLAR



SHIRT



HAT



MUG



PEN



CAP



BANNER 335 CM X 175 CM (PL OR ENG)



FLAG 150X300 CM (PL OR ENG)

## ***MULTI-OFFER SP. Z O.O.***

20-209 Lublin ul. Frezerow 9  
e-mail: bok@przyczepyfaro.pl  
www.farotrailers.com

 Faro Trailers  @farotrailers  FaroTrailers



[www.farotrailers.com](http://www.farotrailers.com)

**2025**